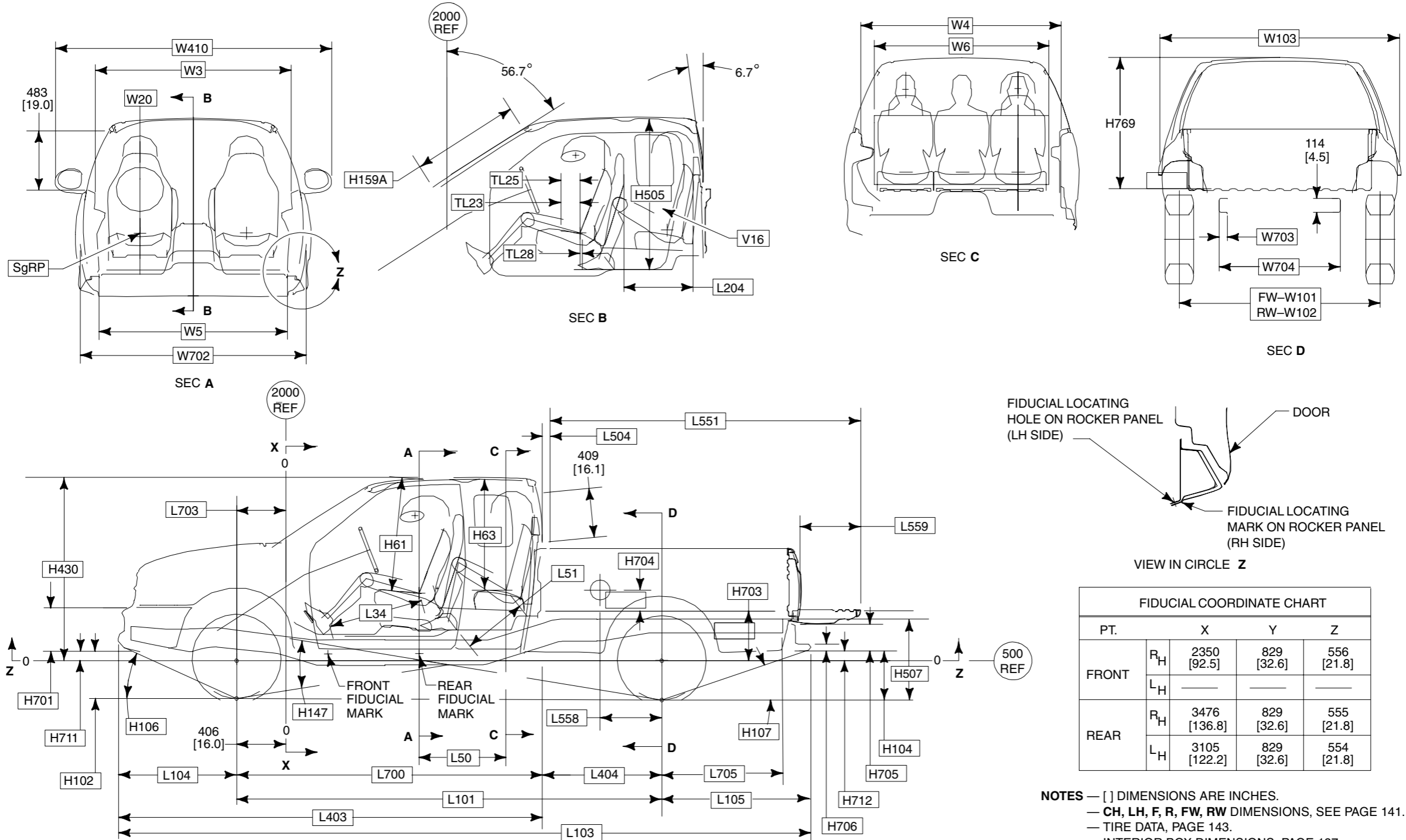


DIMENSIONAL DATA

F-150 SUPERCAB STYLE SIDE 4X2/4X4

2003
MODEL YEAR



FIDUCIAL COORDINATE CHART				
PT.		X	Y	Z
FRONT	R _H	2350 [92.5]	829 [32.6]	556 [21.8]
	L _H	—	—	—
REAR	R _H	3476 [136.8]	829 [32.6]	555 [21.8]
	L _H	3105 [122.2]	829 [32.6]	554 [21.8]

- NOTES** — [] DIMENSIONS ARE INCHES.
 — CH, LH, F, R, FW, RW DIMENSIONS, SEE PAGE 141.
 — TIRE DATA, PAGE 143.
 — INTERIOR BOX DIMENSIONS, PAGE 137.
 — SgRP X AND Z LOCATIONS, PAGE 31.
 — X AND Z REFERENCE LINE LOCATIONS, PAGE 139.

DIMENSIONAL DATA

F-150 SUPERCAB STYLESIDE 4X2/4X4

2003
MODEL YEAR

CHASSIS

CODE	DESCRIPTION	LWB F-150		SWB F-150	
		4x2	4x4	4x2	4x4
H102	BOTTOM OF FRONT BUMPER VALANCE TO GROUND @ CURB	256 [10.1]	338 [13.3]	272 [10.7]	343 [13.5]
H104	BOTTOM OF REAR BUMPER TO GROUND @ CURB	341 [13.4]	433 [17.0]	351 [13.8]	458 [18.0]
H106	ANGLE OF APPROACH	18.3°	26.0°	18.9°	25.8°
H107	ANGLE OF DEPARTURE	16.1°	19.8°	16.2°	19.8°
H147	RAMP BREAKOVER ANGLE	13.6°	16.6°	14.7°	18.7°
H507	TOP OF FRAME TO GROUND	843 [33.2]	843 [33.2]	843 [33.2]	843 [33.2]
L101	WHEELBASE	3991 [157.1]	3998 [157.4]	3518 [138.5]	3525 [138.8]
L103	OVERALL LENGTH — STANDARD REAR STEP BUMPER	6201 [244.1]	6208 [244.4]	5728 [225.5]	5735 [225.8]
L104	FRONT OVERHANG	983 [38.7]	983 [38.7]	983 [38.7]	983 [38.7]
L105	REAR OVERHANG — STANDARD REAR STEP BUMPER	1227 [48.3]	1227 [48.3]	1227 [48.3]	1227 [48.3]
L403	FRONT BUMPER TO REAR OF CAB	3515 [138.4]	3515 [138.4]	3515 [138.4]	3515 [138.4]
L404	CAB TO \varnothing OF REAR AXLE	1459 [57.4]	1466 [57.7]	986 [38.8]	993 [39.1]
L700	\varnothing OF FRONT AXLE TO REAR OF CAB	2532 [99.7]	2532 [99.7]	2532 [99.7]	2532 [99.7]
L705	\varnothing REAR AXLE TO END OF FRAME (INCLUDES REAR BUMPER MOUNTING BRACKET)	1039 [40.9]	1031 [40.6]	1039 [40.9]	1031 [40.6]
W703	FRAME RAIL WIDTH	66 [2.6]	66 [2.6]	66 [2.6]	66 [2.6]
W704	REAR FRAM WIDTH	1001 [39.4]	1001 [39.4]	1001 [39.4]	1001 [39.4]

PICKUP BODY

CODE	DESCRIPTION	LWB F-150		SWB F-150	
		4x2	4x4	4x2	4x4
NOMINAL CARGO BODY SIZE		8 FT.		6.5 FT.	
H703	Z REFERENCE LINE TO CARGO BODY FLOOR	424 [16.7]	424 [16.7]	424 [16.7]	424 [16.7]
H704	TOP OF FLOOR TO \varnothing OF FUEL FILLER	170 [6.7]	170 [6.7]	170 [6.7]	170 [6.7]
H705	REAR BUMPER HEIGHT	221 [8.7]	221 [8.7]	221 [8.7]	221 [8.7]
—	REAR BUMPER WIDTH (NOT SHOWN)	1872 [73.7]	1872 [73.7]	1872 [73.7]	1872 [73.7]
H706	BOTTOM OF REAR BUMPER TO TOP OF BUMPER HITCH PLATE	51 [2.0]	51 [2.0]	51 [2.0]	51 [2.0]
H712	Z REFERENCE LINE TO BOTTOM OF REAR BUMPER	178 [7.0]	178 [7.0]	178 [7.0]	178 [7.0]
H769	TOP OF FLOOR TO TOP OF CAB @ \varnothing REAR WHEELS	1092 [43.0]	1092 [43.0]	1092 [43.0]	1092 [43.0]
L504	CAB TO PICKUP BODY	13.5 [0.5]	13.5 [0.5]	13.5 [0.5]	13.5 [0.5]
L551	BOX OVERALL LENGTH TO OPEN TAILGATE	3068 [120.8]	3068 [120.8]	2601 [102.4]	2601 [102.4]
L558	\varnothing REAR AXLE TO \varnothing FUEL FILLER	505 [19.9]	513 [20.2]	505 [19.9]	513 [20.2]
L559	OPEN TAILGATE	498 [19.6]	498 [19.6]	498 [19.6]	498 [19.6]

CAB

CODE	DESCRIPTION	4x2	4x4
H61	EFFECTIVE HEAD ROOM —FRONT	1036 [40.8]	1036 [40.8]
H63	EFFECTIVE HEAD ROOM —REAR	960 [37.8]	960 [37.8]
H159A	WINDSHIELD HEIGHT	889 [35.0]	889 [35.0]
H430	Z REFERENCE LINE TO TOP OF CAB	1516 [59.7]	1516 [59.7]
H505	MAXIMUM INTERIOR CARGO HEIGHT (REAR SEAT)	1166 [45.9]	1166 [45.9]
H701	FRONT BUMPER HEIGHT	259 [10.2]	282 [11.1]
H711	Z REFERENCE LINE TO BOTTOM OF FRONT BUMPER (LESS LOWER VALANCE)	178 [7.0]	142 [5.6]
TL23	FORWARD SEAT TRACK	159 [6.3]	159 [6.3]
TL25	TRUE TRACK TRAVEL LENGTH	220 [8.7]	220 [8.7]
TL28	TRUE TRACK TRAVEL LENGTH REAR OF SgRP	40 [1.6]	40 [1.6]
L34	EFFECTIVE LEG ROOM —FRONT	1039 [40.9]	1039 [40.9]
L50	H-POINT COUPLE DISTANCE	719 [28.3]	719 [28.3]
L51	EFFECTIVE LEG ROOM —REAR	818 [32.2]	818 [32.2]
L204	BACK OF FRONT SEAT TO BACK PANEL	571 [22.5]	571 [22.5]
L703	\varnothing FRONT AXLE TO COWL POINT	345 [13.6]	345 [13.6]
W3	SHOULDER ROOM —FRONT	1620 [63.8]	1620 [63.8]
W4	SHOULDER ROOM —REAR	1620 [63.8]	1620 [63.8]
W5	HIP ROOM —FRONT	1549 [61.0]	1549 [61.0]
W6	HIP ROOM —REAR	1605 [63.2]	1605 [63.2]
W20	SgRP (Y)	-439 [-17.3]	-439 [-17.3]
W103	VEHICLE WIDTH	2014 [79.3]	2019 [79.4]
W410	OVERALL WIDTH WITH STANDARD MIRRORS	2278 [89.7]	2278 [89.7]
W702	FRONT BUMPER WIDTH	1880 [74.0]	1892 [74.5]
V16	REAR CARGO VOLUME WITH REAR SEAT CUSHION FOLDED UP —LITRES/CU.FT.	1082/ 38.2	1082/ 38.2

NOTE — [] DIMENSIONS ARE INCHES.